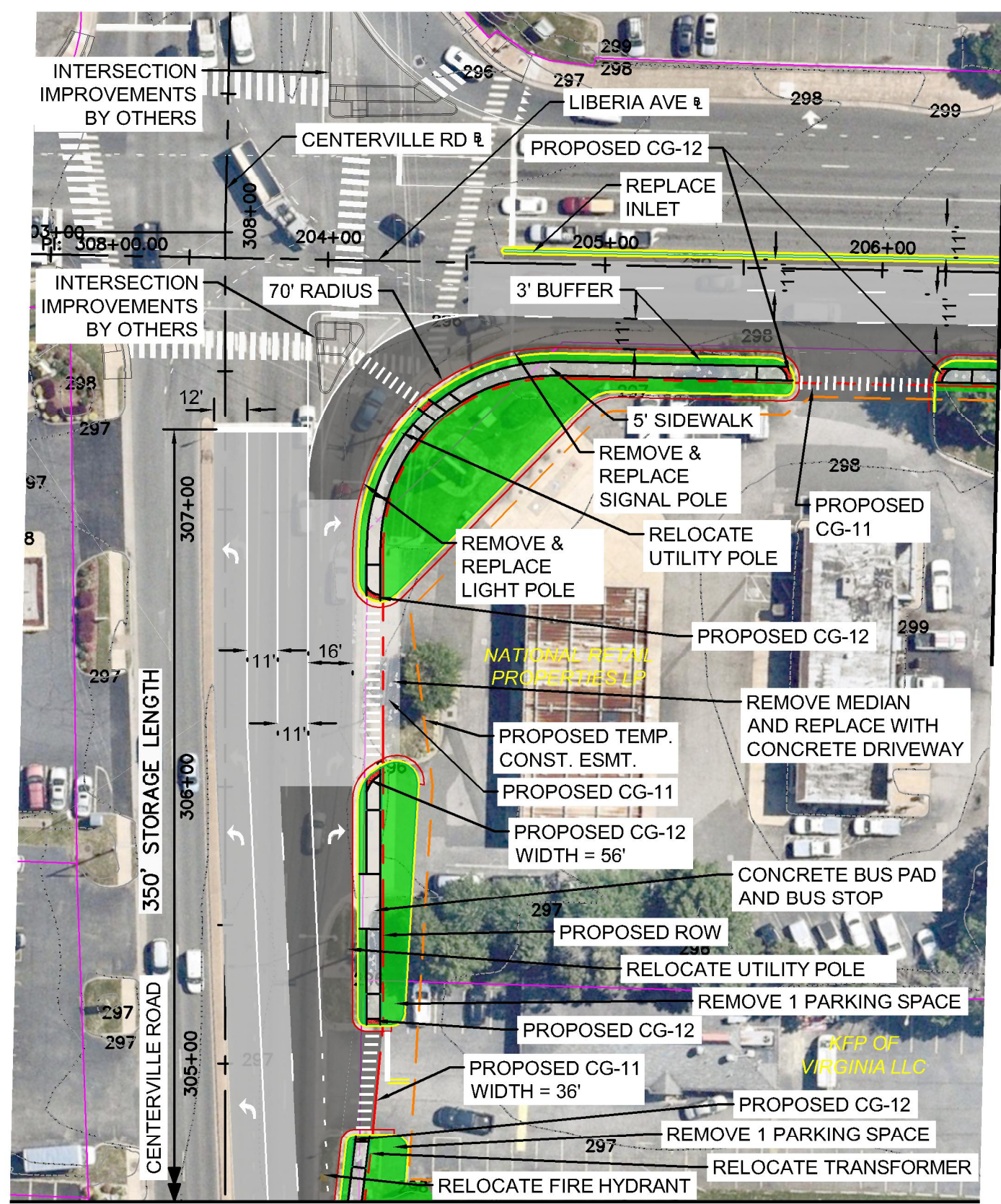
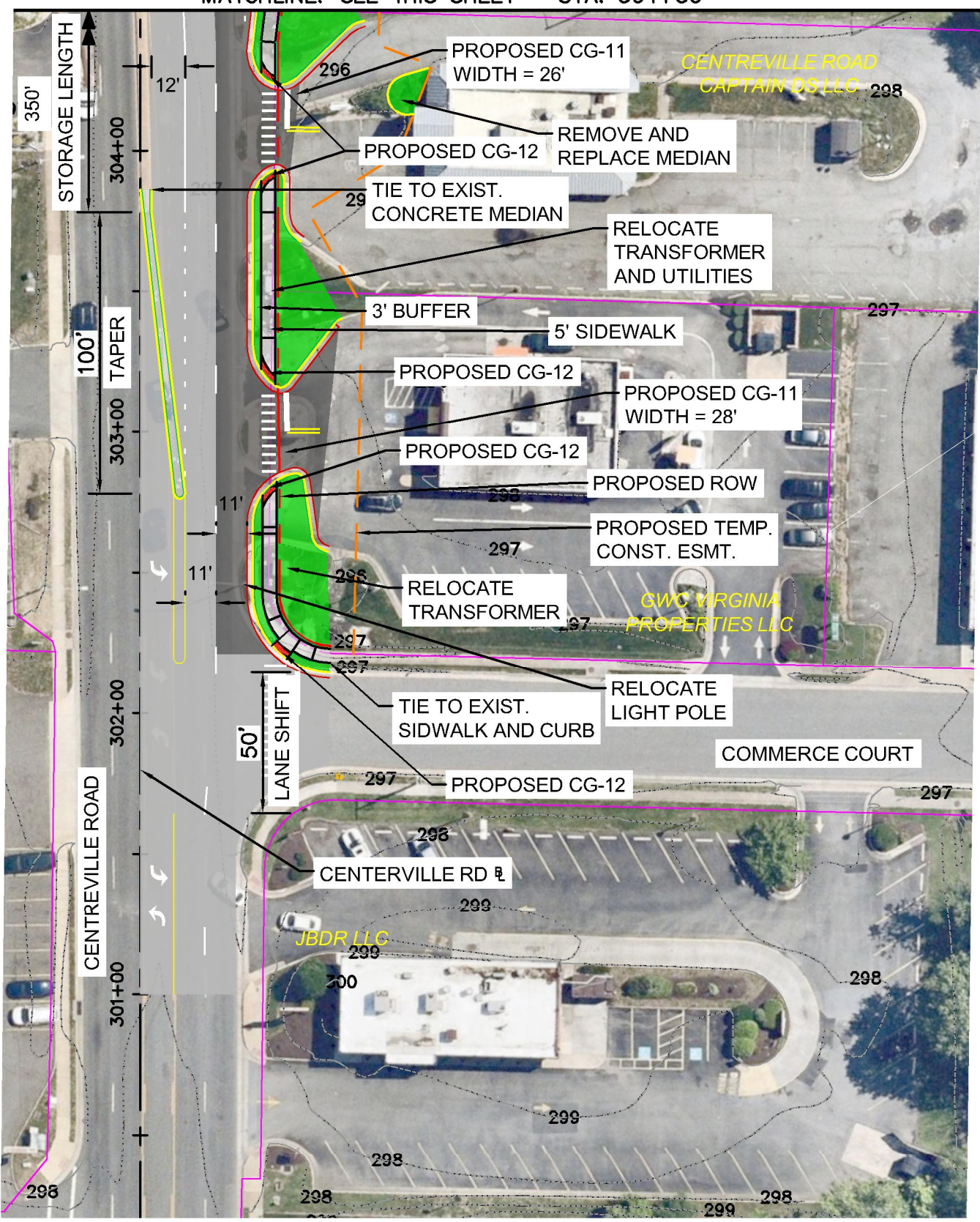


MATCHLINE: SEE THIS SHEET - STA. 304+50

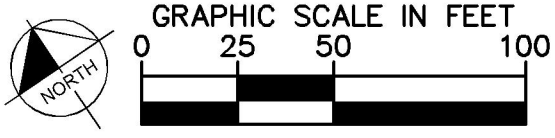


MATCHLINE: SEE THIS SHEET - STA. 304+50

DRAFT
THIS CONCEPTUAL PLAN WAS PRODUCED FOR DISCUSSION PURPOSES ONLY.

- PROP FULL DEPTH ASPHALT PAVEMENT
- PROP CONCRETE (SIDEWALK/MED) BUFFER
- PROP GRASS MEDIAN/ BUFFER
- PROP CURB & GUTTER
- EXIST CURB/ EDGE OF PAVEMENT
- PROP ROW
- PARCELS
- ROAD EDGE
- HYDRANTS
- VALVES

ALTERNATIVE 2
LIBERIA AVENUE WIDENING

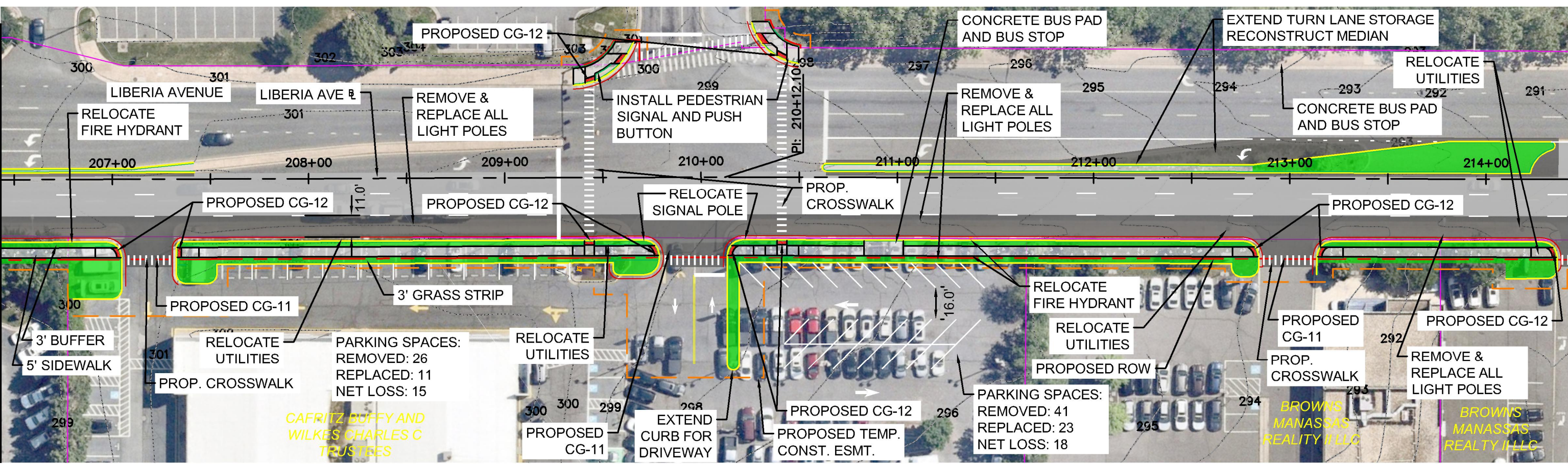


Kimley»Horn

SHEET NUMBER
1 OF 2

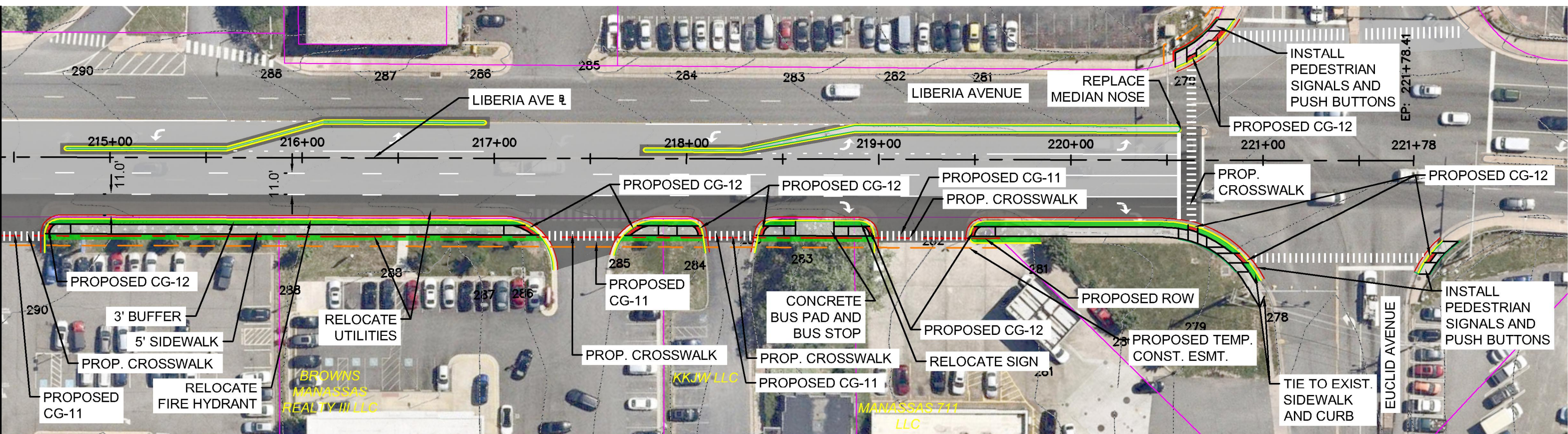
This document, together with the concepts and designs presented herein, is intended only for the specific purpose and client for which it was prepared. Release of and improper reliance on this document without written authorization and adaptation by Kimley-Horn and Associates, Inc. shall be without liability to Kimley-Horn and Associates, Inc.

MATCHLINE: SEE SHEET 1 - STA. 206+50



MATCHLINE: SEE THIS SHEET - STA. 214+50

MATCHLINE: SEE THIS SHEET - STA. 214+50



DRAFT
 THIS CONCEPTUAL PLAN WAS PRODUCED FOR DISCUSSION PURPOSES ONLY.

	PROP FULL DEPTH ASPHALT PAVEMENT		EXIST CURB/ EDGE OF PAVEMENT PROP ROW		ROAD EDGE HYDRANTS VALVES
	PROP CONCRETE (SIDEWALK/MED)		PROP GRASS MEDIAN/ BUFFER		PROP MILL AND OVERLAY
	PROP CURB & GUTTER				

ALTERNATIVE 2
 LIBERIA AVENUE WIDENING

