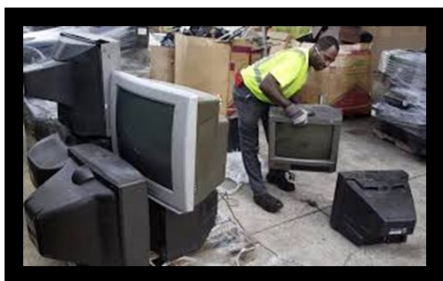


How does a television get recycled?

Did you Know ...

All types of electronic waste present a challenge for recyclers, but televisions and monitors are particularly difficult to deal with. Older models contain a cathode ray tube (CRT), which is the large triangular glass contraption that makes up the bulk of the monitor. The glass in a CRT can contain up to 8 pounds of a lead, layers of other dangerous heavy metals.

In 2015, the City of Manassas recycled over 1,000 (6.9 tons)



1. In Manassas, televisions are dropped off for recycling by residents.



3. The plastic, wood and copper coil found on the back of the CRT can be sold on the commodities market and turned into new products. The circuit boards go to specialized recyclers that reclaim the gold, platinum and other precious metals. The glass is ground and the recycled into something really cool! Tiles!!



2. At the recycling center, a worker hand dismantles each television or monitor, separating out the different components.

